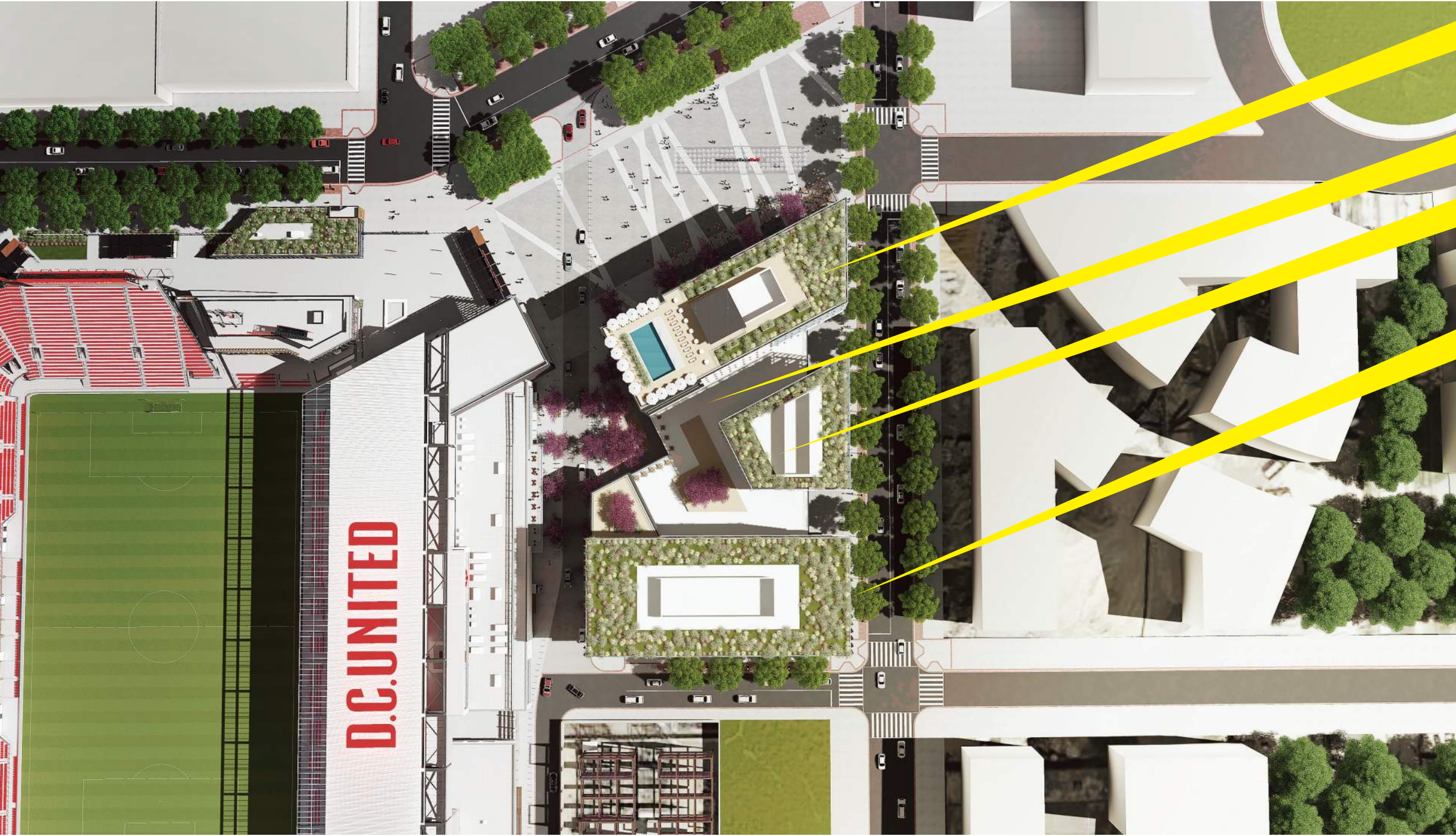






# PARCEL B POTENTIAL



HOTEL & EVENT CENTER

ELEVATED COURTYARD  
ABOVE RETAIL BASE

OFFICE SPACE

OFFICE SPACE





PARCEL B  
POTENTIAL



# PARCEL B POTENTIAL



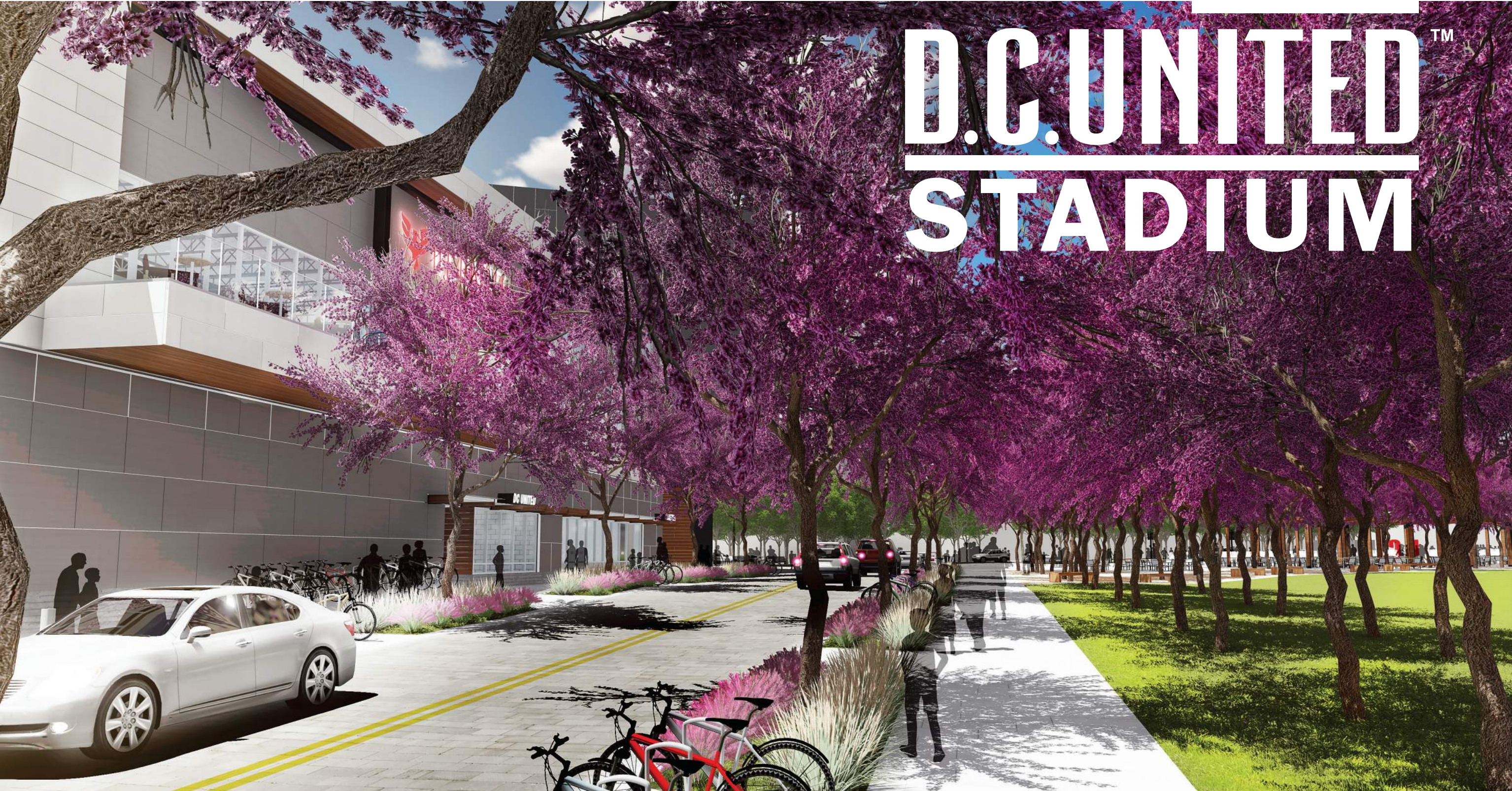


PARCEL B  
POTENTIAL





# D.C. UNITED <sup>TM</sup> STADIUM





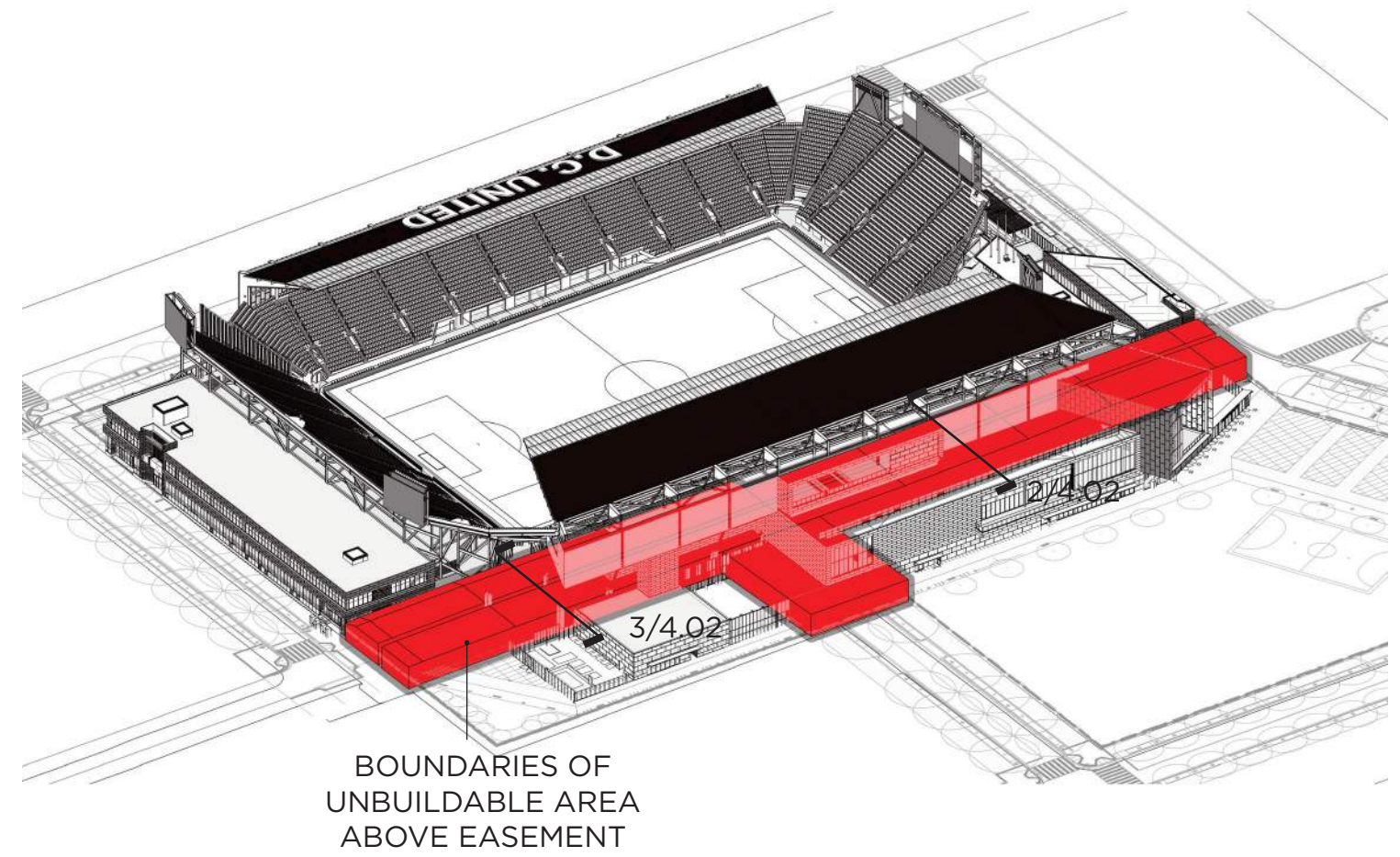
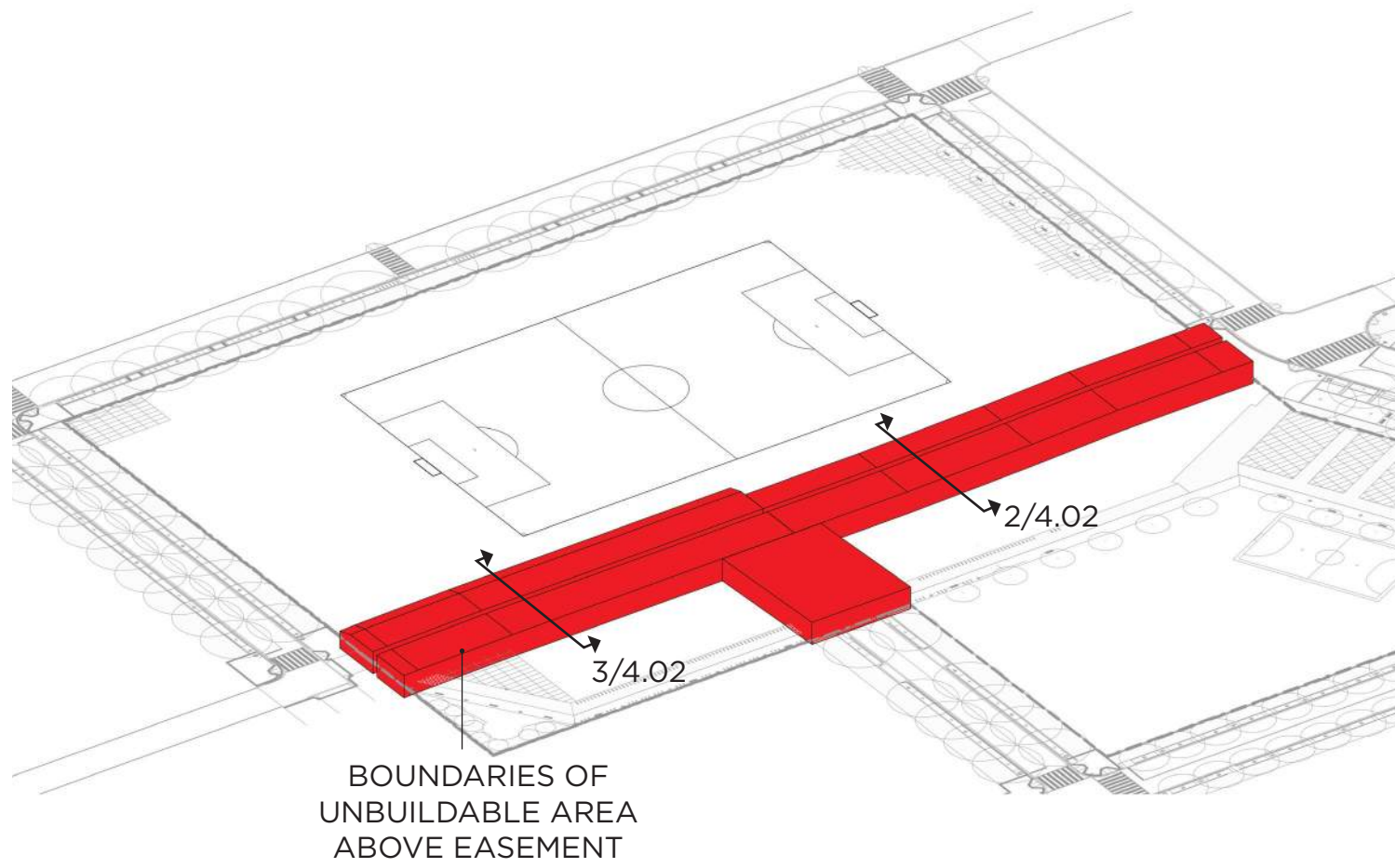
## SECTION

# 04

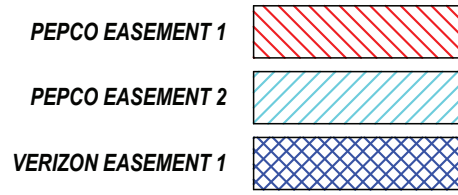
EASEMENT  
DIAGRAMS

STADIUM  
TECHNICAL  
DRAWINGS

- 4.01 EASEMENT DIAGRAMS
- 4.02 EASEMENT DIAGRAMS
  
- 4.03 LVL 00 - BASEMENT LEVEL PLAN
- 4.04 LVL 01 - FIELD LEVEL PLAN
- 4.05 LVL 02 - CLUB LEVEL PLAN
- 4.06 LVL 03 - SUITE LEVEL PLAN
- 4.07 LVL 04 - UPPER CONCOURSE PLAN
- 4.08 LVL 05 - ROOF PLAN
- 4.09 OVERALL BUILDING SECTIONS
- 4.10 ENLARGED BUILDING SECTIONS



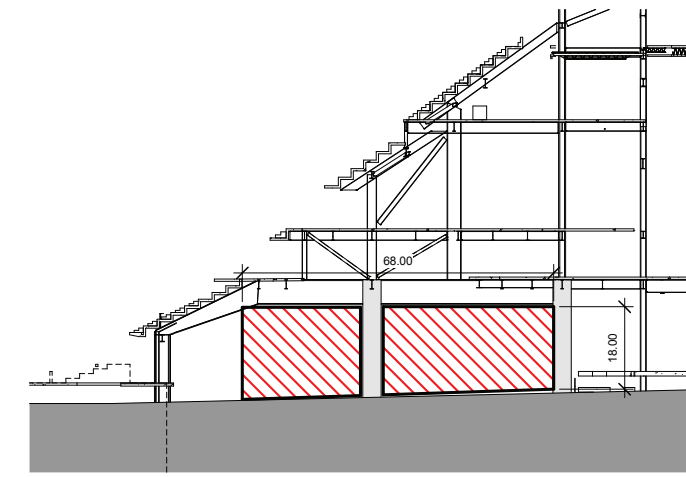




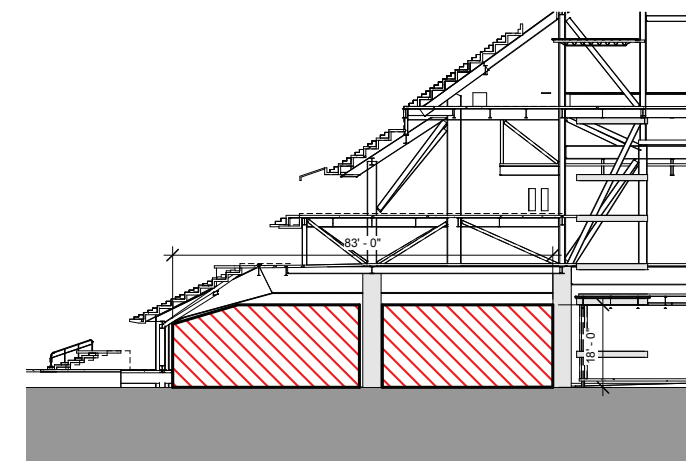
PART B - NOT PART OF STADIUM  
PUD SUBMISSION, DESIGN INTENT  
SHOWN FOR REFERENCE ONLY

PUBLIC REALM - NOT PART OF PUD  
SUBMISSION, DESIGN INTENT SHOWN  
FOR REFERENCE ONLY

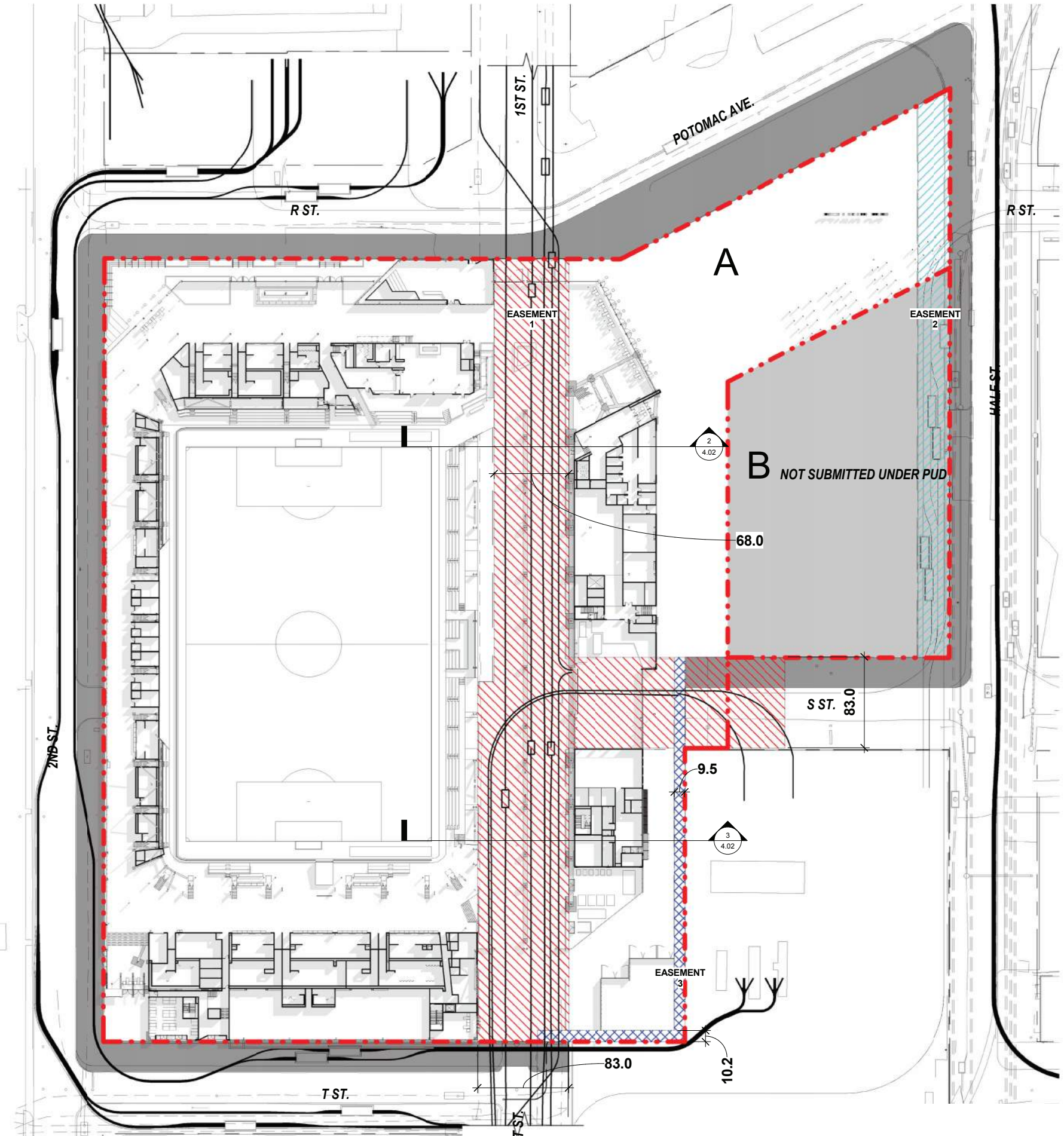
DISTRICT OF COLUMBIA RESPONSIBLE  
FOR DESIGN OF PUBLIC REALM



2 EASEMENT SECTION  
1" = 20'-0"



3 EASEMENT SECTION  
1" = 20'-0"



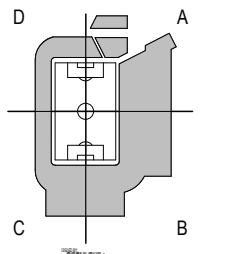
1 PEPCO EASEMENT PLAN  
1" = 50'-0"

**POPULOUS**  
Marshall Moya Design



DC UNITED SOCCER STADIUM  
100 Potomac Avenue, SW  
Washington, DC 20024

PUD #2 SUBMISSION



PROJECT NORTH

EASEMENT - NEW CONSTRUCTION

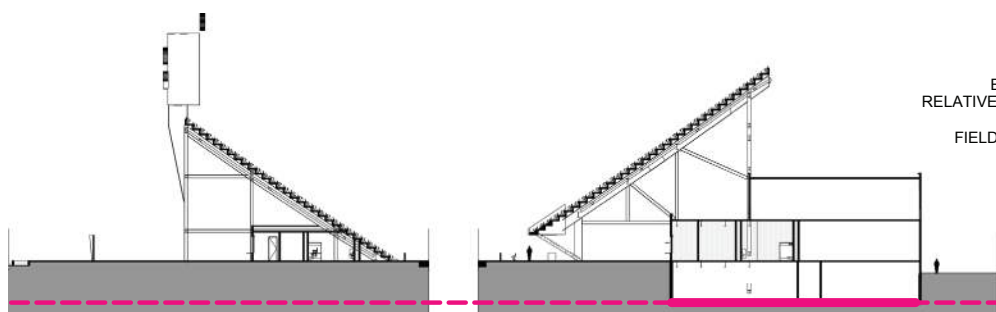


- 1 - SPECTATOR FACILITIES
- 1 - SPECTATOR FACILITIES - PREMIUM
- 1 - SPECTATOR FACILITIES - PREMIUM PATIO
- 2 - FOOD SERVICE & RETAIL
- 3 - TEAM FACILITIES
- 3 - TEAM FACILITIES HOME
- 4 - MEDIA FACILITIES
- 5 - ADMINISTRATION FACILITIES
- 6 - SERVICE & OPERATIONS
- 7 - CIRCULATION
- 7 - VERTICAL CIRCULATION
- 8 - BIKE VALET

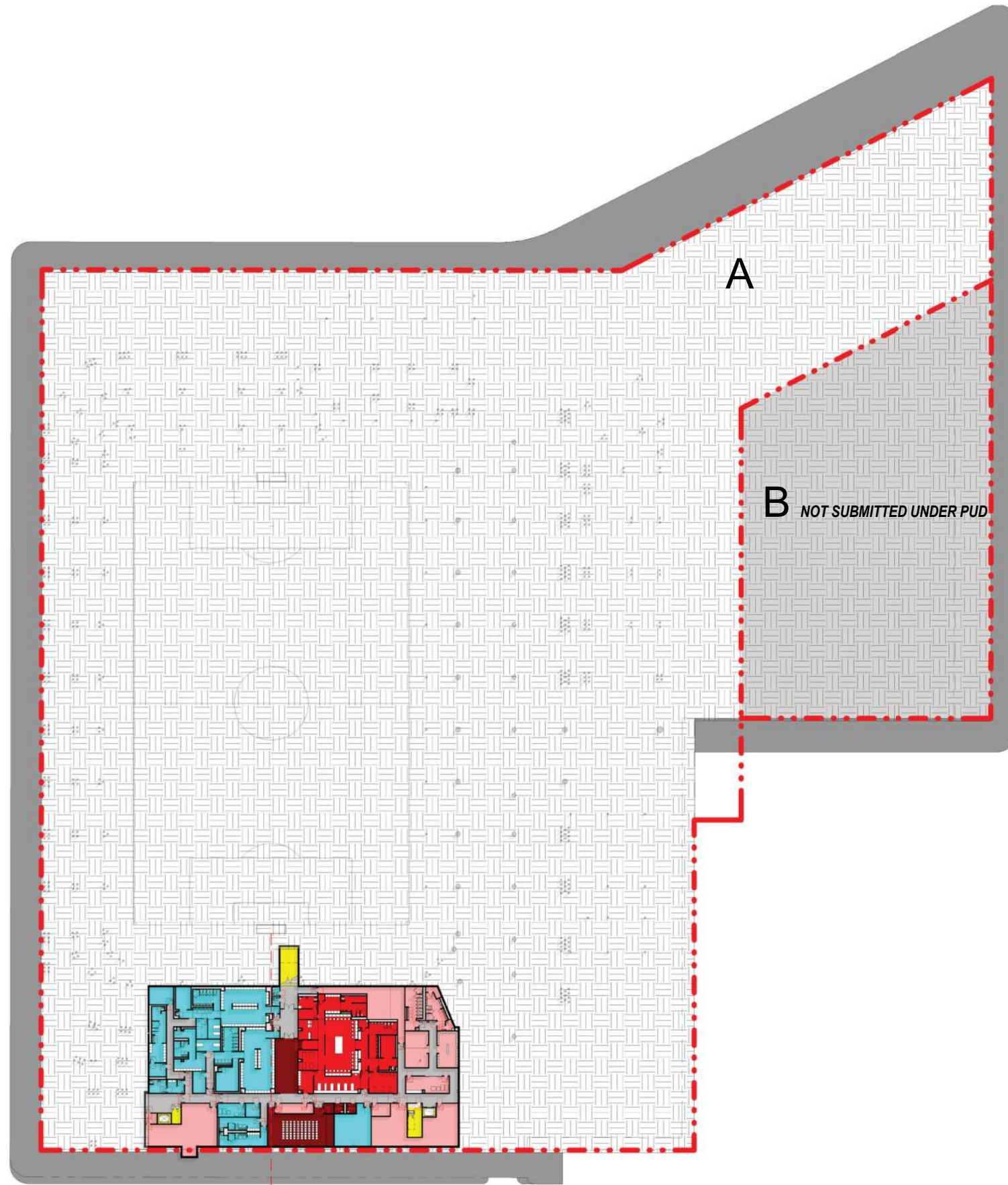
**PART B - NOT PART OF STADIUM  
PUD SUBMISSION, DESIGN INTENT  
SHOWN FOR REFERENCE ONLY**

**PUBLIC REALM - NOT PART OF PUD  
SUBMISSION, DESIGN INTENT SHOWN  
FOR REFERENCE ONLY**

**DISTRICT OF COLUMBIA RESPONSIBLE  
FOR DESIGN OF PUBLIC REALM**



ELEVATIONS ARE  
RELATIVE TO FIELD LEVEL  
FIELD LEVEL @ +22'-0"  
ABOVE SEA  
LEVEL

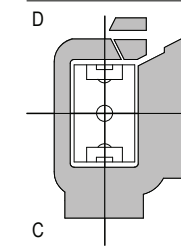


**POPULOUS**  
Marshall | Moya Design



DC UNITED SOCCER STADIUM  
100 Potomac Avenue, SW  
Washington, DC 20024

PUD #2 SUBMISSION



REF PLAN - BASEMENT  
LEVEL PLAN



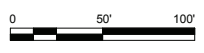
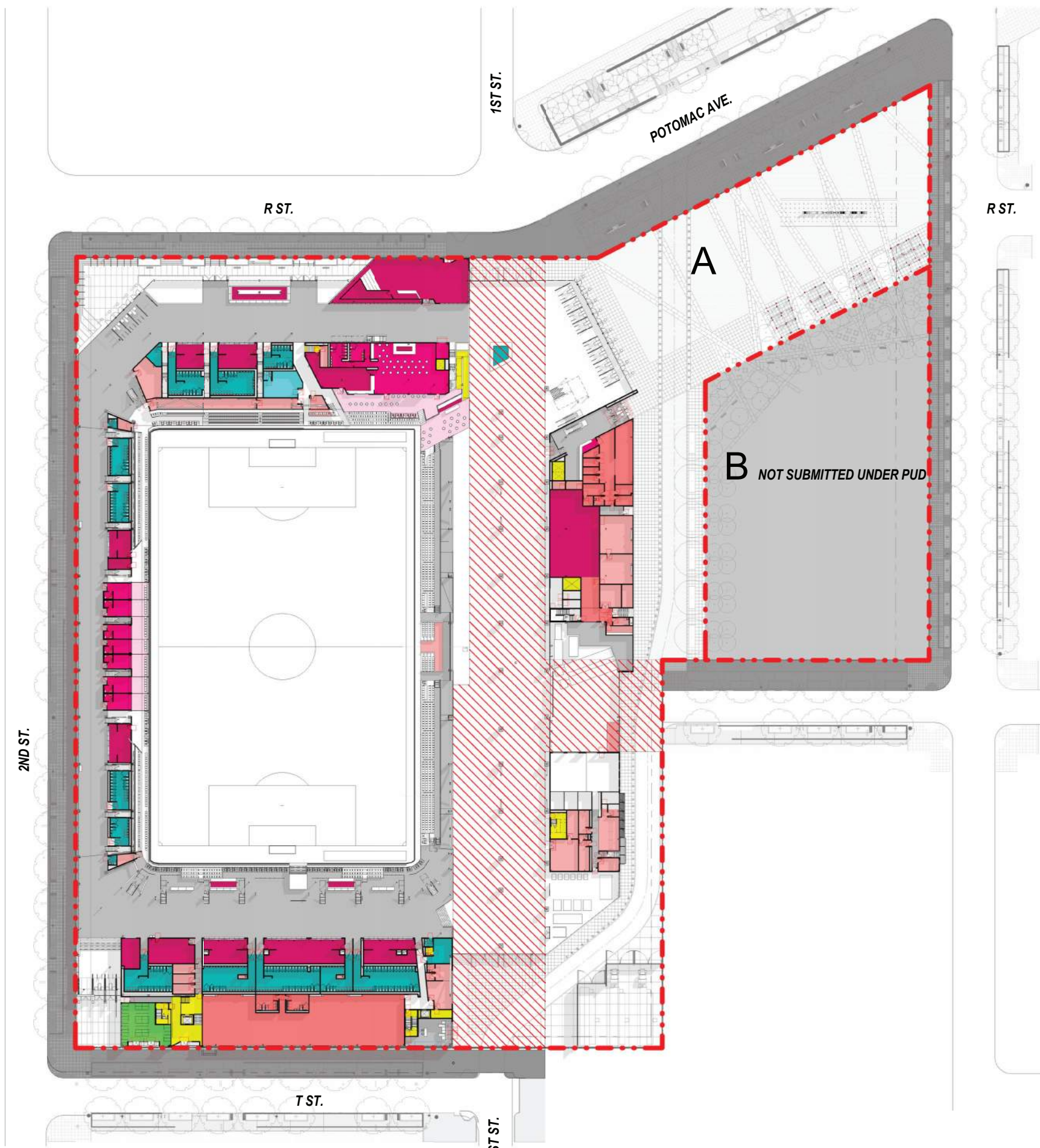
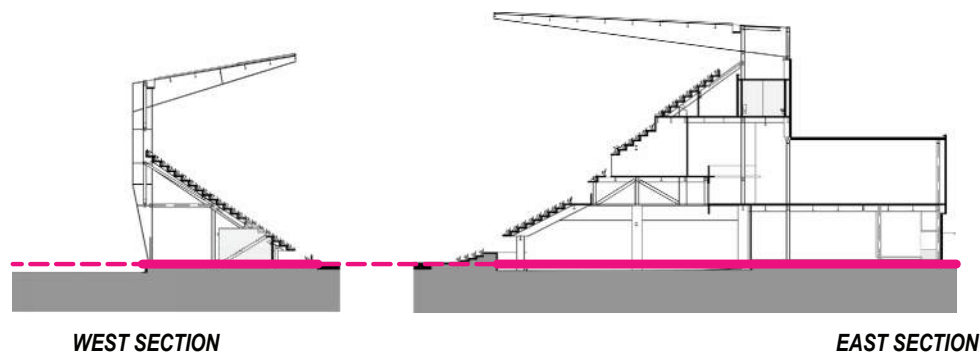


- 1 - SPECTATOR FACILITIES
- 1 - SPECTATOR FACILITIES - PREMIUM
- 1 - SPECTATOR FACILITIES - PREMIUM PATIO
- 2 - FOOD SERVICE & RETAIL
- 3 - TEAM FACILITIES
- 3 - TEAM FACILITIES HOME
- 4 - MEDIA FACILITIES
- 5 - ADMINISTRATION FACILITIES
- 6 - SERVICE & OPERATIONS
- 7 - CIRCULATION
- 7 - VERTICAL CIRCULATION
- 8 - BIKE VALET

**PART B - NOT PART OF STADIUM  
PUD SUBMISSION, DESIGN INTENT  
SHOWN FOR REFERENCE ONLY**

**PUBLIC REALM - NOT PART OF PUD  
SUBMISSION, DESIGN INTENT SHOWN  
FOR REFERENCE ONLY**

**DISTRICT OF COLUMBIA RESPONSIBLE  
FOR DESIGN OF PUBLIC REALM**



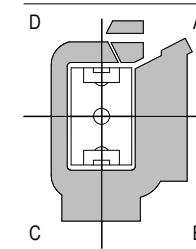
**1 FIELD LEVEL PLAN**  
1" = 50'-0"

**POPULOUS**  
Marshall | Moya Design



DC UNITED SOCCER STADIUM  
100 Potomac Avenue, SW  
Washington, DC 20024

PUD #2 SUBMISSION



REF PLAN - FIELD LEVEL  
PLAN

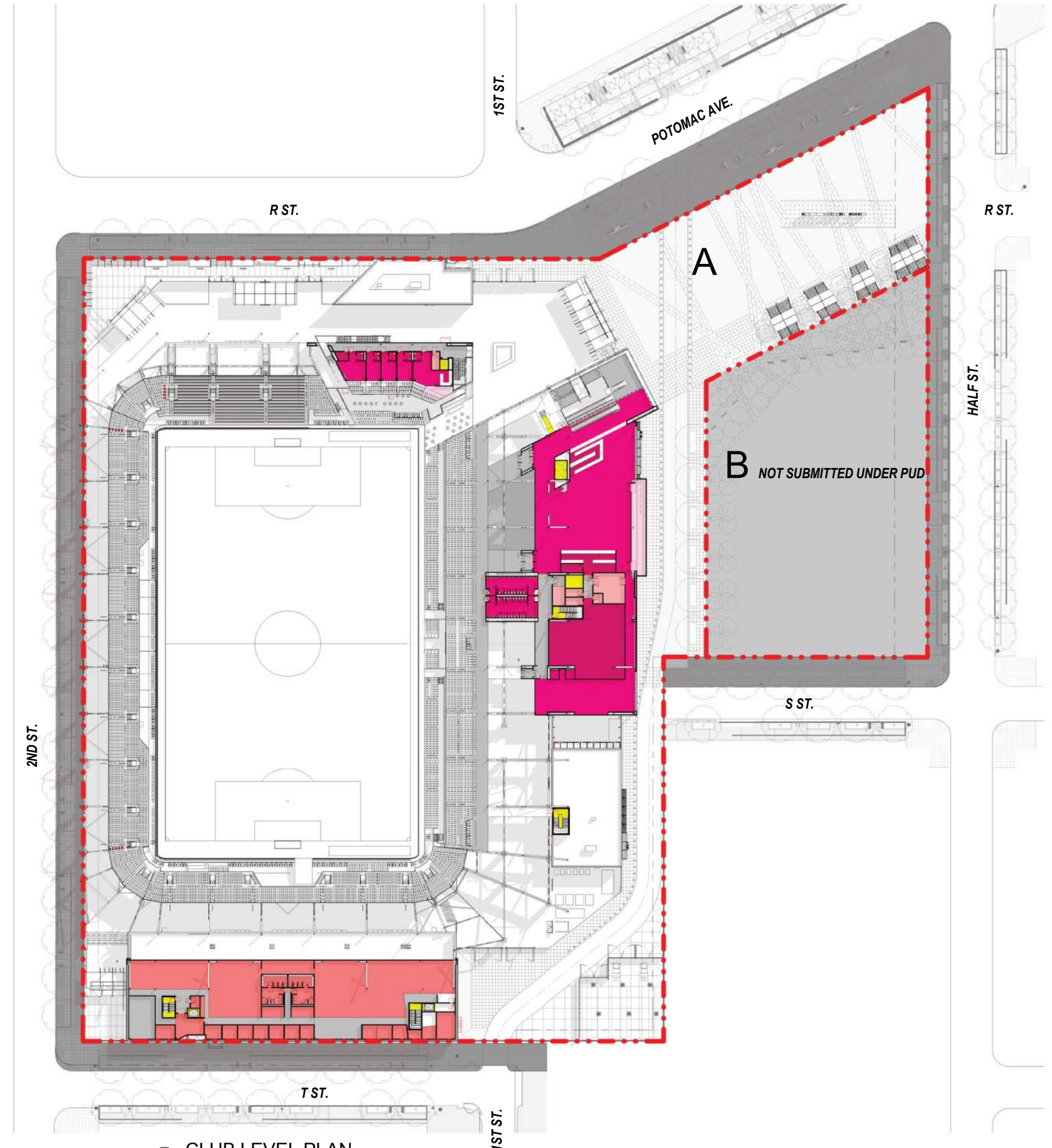
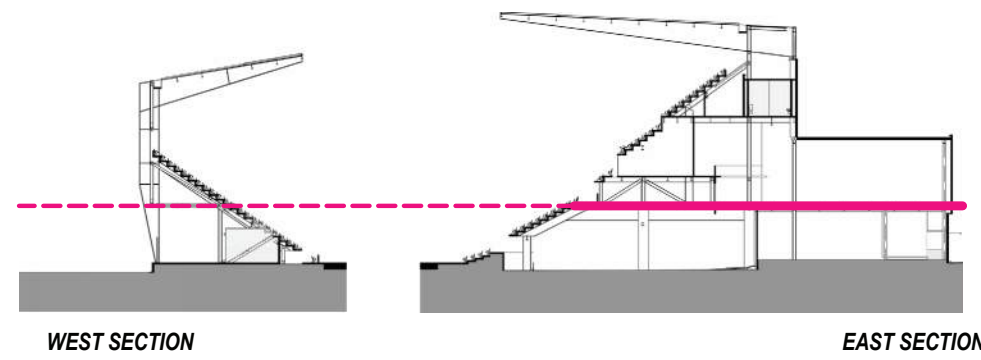


- 1 - SPECTATOR FACILITIES
- 1 - SPECTATOR FACILITIES - PREMIUM
- 1 - SPECTATOR FACILITIES - PREMIUM PATIO
- 2 - FOOD SERVICE & RETAIL
- 3 - TEAM FACILITIES
- 3 - TEAM FACILITIES HOME
- 4 - MEDIA FACILITIES
- 5 - ADMINISTRATION FACILITIES
- 6 - SERVICE & OPERATIONS
- 7 - CIRCULATION
- 7 - VERTICAL CIRCULATION
- 8 - BIKE VALET

**PART B - NOT PART OF STADIUM  
PUD SUBMISSION, DESIGN INTENT  
SHOWN FOR REFERENCE ONLY**

**PUBLIC REALM - NOT PART OF PUD  
SUBMISSION, DESIGN INTENT SHOWN  
FOR REFERENCE ONLY**

**DISTRICT OF COLUMBIA RESPONSIBLE  
FOR DESIGN OF PUBLIC REALM**

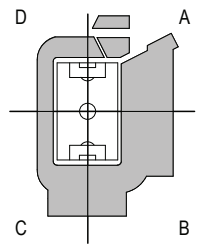


**POPULOUS**  
Marshall | Moya Design



DC UNITED SOCCER STADIUM  
100 Potomac Avenue, SW  
Washington, DC 20024

PUD #2 SUBMISSION



REF PLAN - CLUB LEVEL  
PLAN

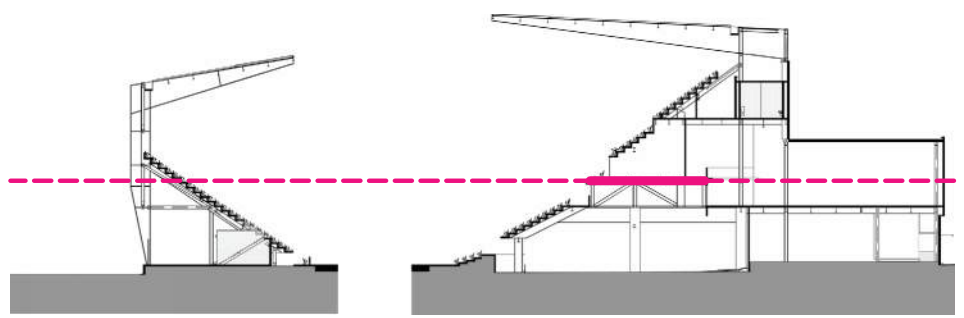


- 1 - SPECTATOR FACILITIES
- 1 - SPECTATOR FACILITIES - PREMIUM
- 1 - SPECTATOR FACILITIES - PREMIUM PATIO
- 2 - FOOD SERVICE & RETAIL
- 3 - TEAM FACILITIES
- 3 - TEAM FACILITIES HOME
- 4 - MEDIA FACILITIES
- 5 - ADMINISTRATION FACILITIES
- 6 - SERVICE & OPERATIONS
- 7 - CIRCULATION
- 7 - VERTICAL CIRCULATION
- 8 - BIKE VALET

**PART B - NOT PART OF STADIUM  
PUD SUBMISSION, DESIGN INTENT  
SHOWN FOR REFERENCE ONLY**

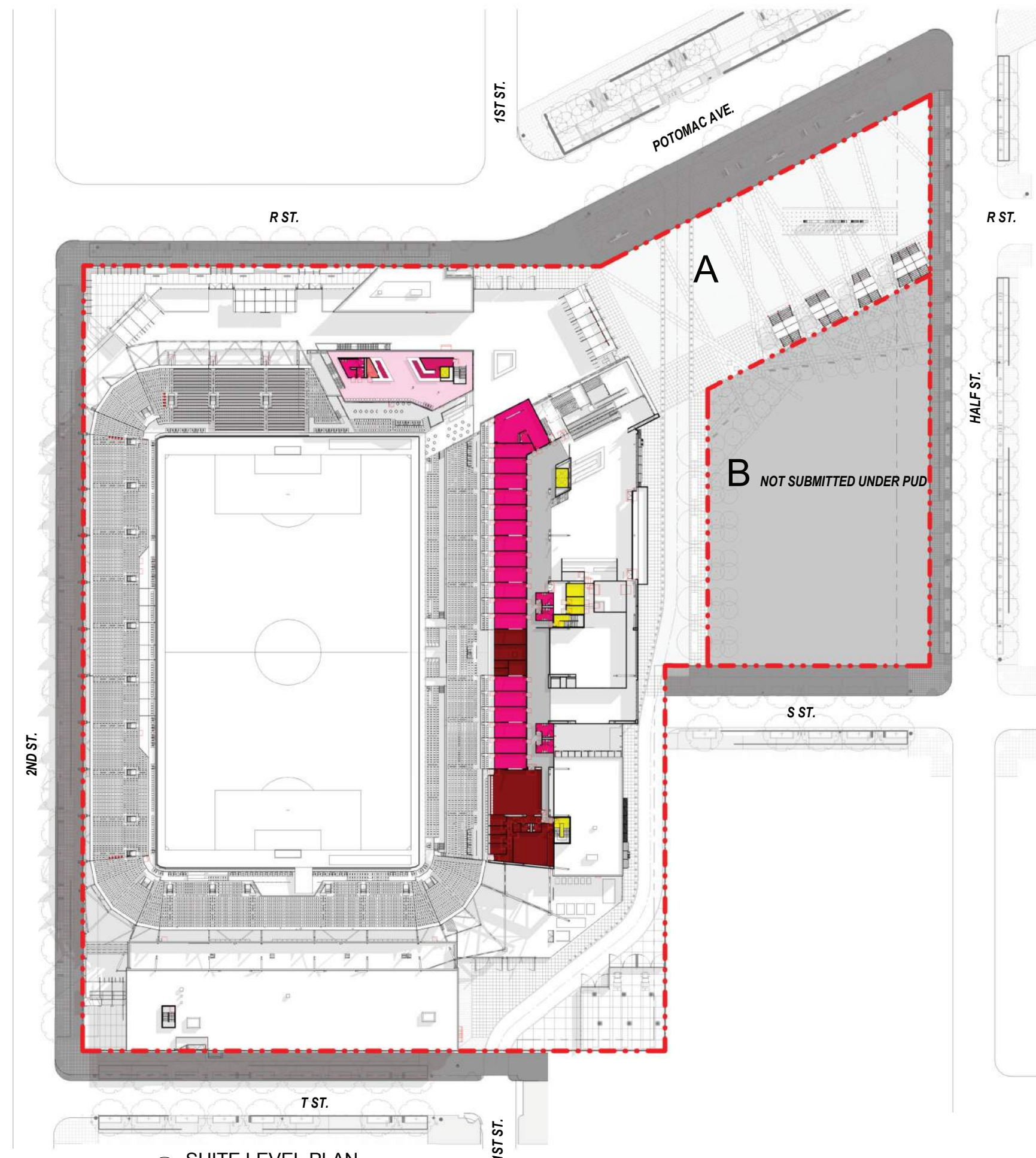
**PUBLIC REALM - NOT PART OF PUD  
SUBMISSION, DESIGN INTENT SHOWN  
FOR REFERENCE ONLY**

**DISTRICT OF COLUMBIA RESPONSIBLE  
FOR DESIGN OF PUBLIC REALM**



WEST SECTION

EAST SECTION



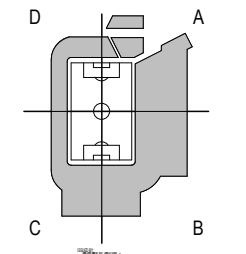
**1 SUITE LEVEL PLAN**  
1" = 50'-0"

**POPULOUS**  
Marshall | Moya Design



DC UNITED SOCCER STADIUM  
100 Potomac Avenue, SW  
Washington, DC 20024

PUD #2 SUBMISSION



PROJECT NORTH

REF PLAN - SUITE LEVEL PLAN

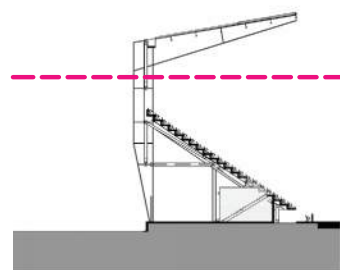


- 1 - SPECTATOR FACILITIES
- 1 - SPECTATOR FACILITIES - PREMIUM
- 1 - SPECTATOR FACILITIES - PREMIUM PATIO
- 2 - FOOD SERVICE & RETAIL
- 3 - TEAM FACILITIES
- 3 - TEAM FACILITIES HOME
- 4 - MEDIA FACILITIES
- 5 - ADMINISTRATION FACILITIES
- 6 - SERVICE & OPERATIONS
- 7 - CIRCULATION
- 7 - VERTICAL CIRCULATION
- 8 - BIKE VALET

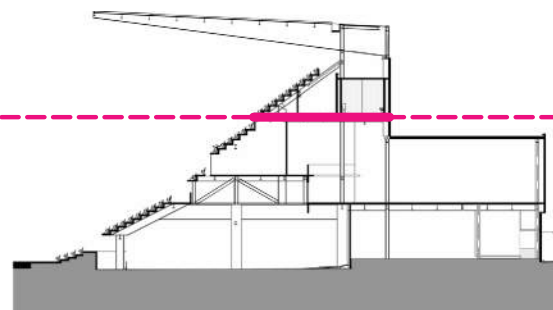
**PART B - NOT PART OF STADIUM  
PUD SUBMISSION, DESIGN INTENT  
SHOWN FOR REFERENCE ONLY**

**PUBLIC REALM - NOT PART OF PUD  
SUBMISSION, DESIGN INTENT SHOWN  
FOR REFERENCE ONLY**

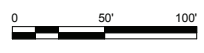
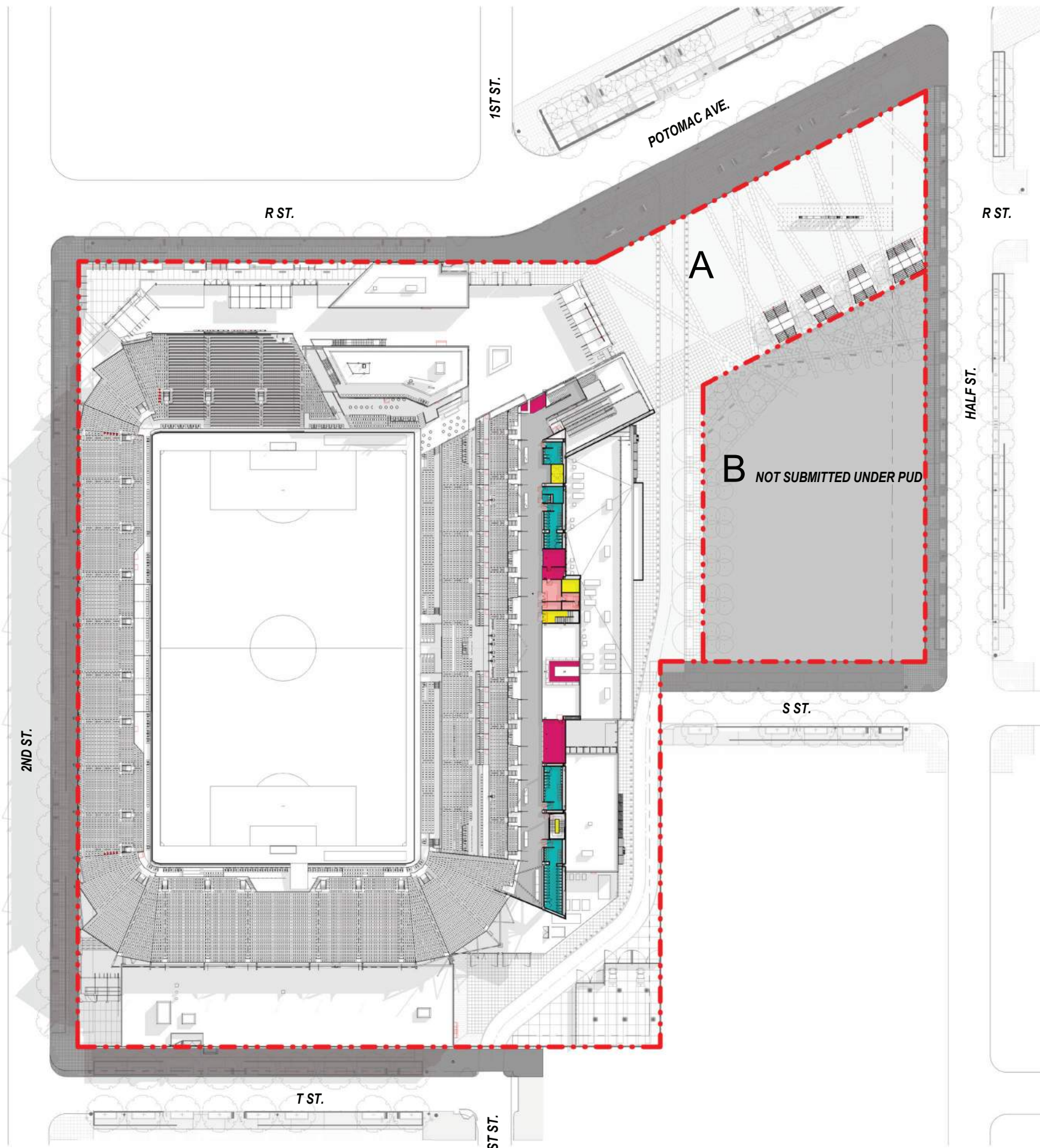
**DISTRICT OF COLUMBIA RESPONSIBLE  
FOR DESIGN OF PUBLIC REALM**



WEST SECTION



EAST SECTION



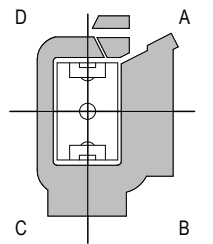
**1 UPPER CONCOURSE PLAN**  
1" = 50'-0"

**POPULOUS**  
Marshall | Moya Design



DC UNITED SOCCER STADIUM  
100 Potomac Avenue, SW  
Washington, DC 20024

PUD #2 SUBMISSION



REF PLAN - UPPER CONCOURSE LEVEL PLAN

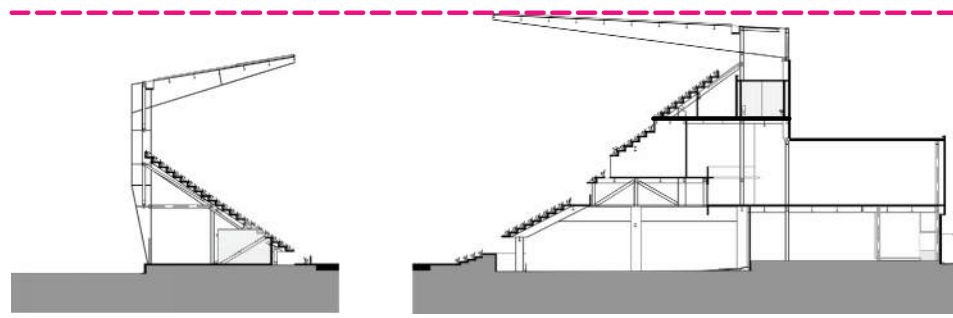


- 1 - SPECTATOR FACILITIES
- 1 - SPECTATOR FACILITIES - PREMIUM
- 1 - SPECTATOR FACILITIES - PREMIUM PATIO
- 2 - FOOD SERVICE & RETAIL
- 3 - TEAM FACILITIES
- 3 - TEAM FACILITIES HOME
- 4 - MEDIA FACILITIES
- 5 - ADMINISTRATION FACILITIES
- 6 - SERVICE & OPERATIONS
- 7 - CIRCULATION
- 7 - VERTICAL CIRCULATION
- 8 - BIKE VALET

**PART B - NOT PART OF STADIUM  
PUD SUBMISSION, DESIGN INTENT  
SHOWN FOR REFERENCE ONLY**

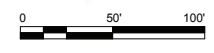
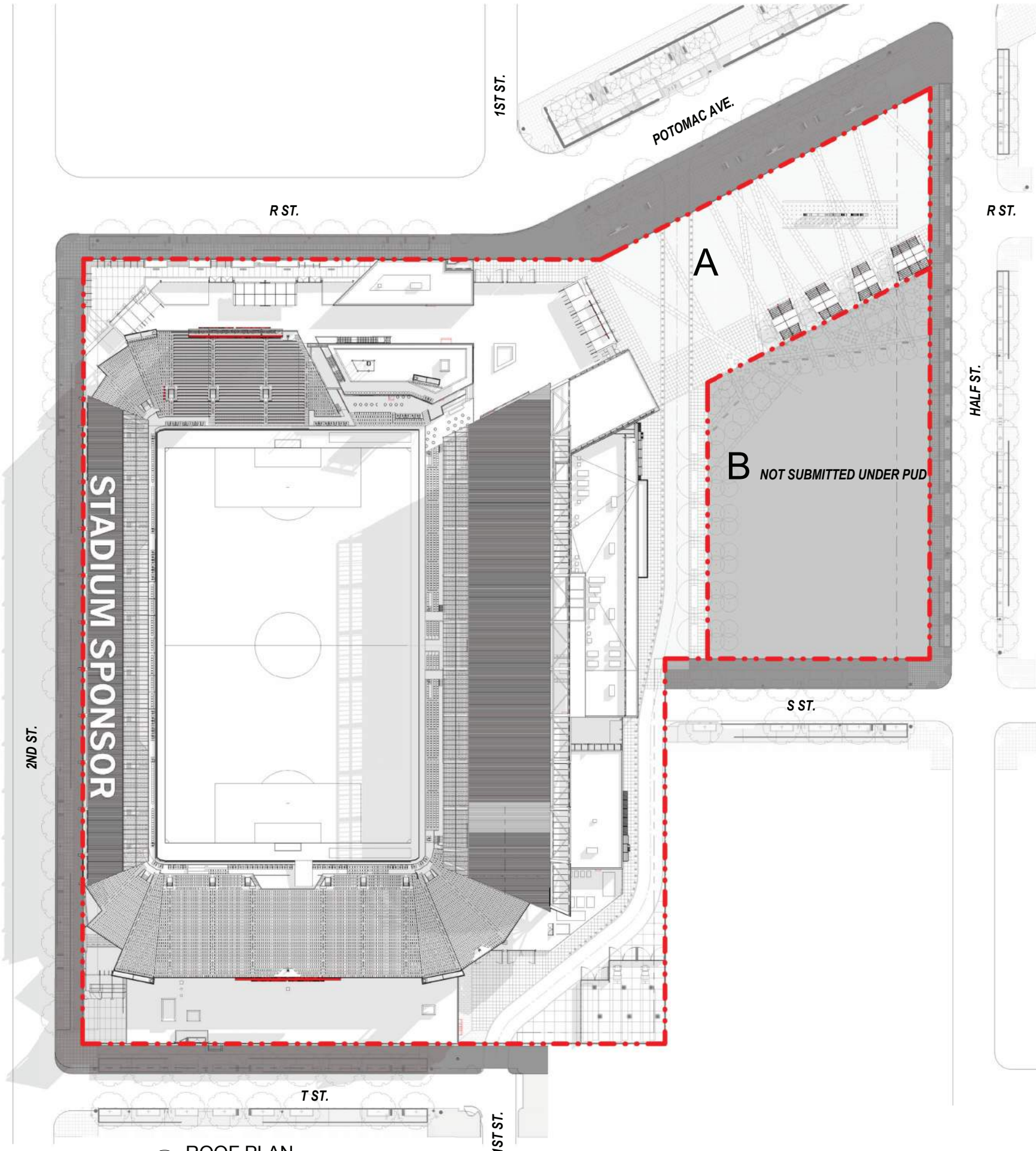
**PUBLIC REALM - NOT PART OF PUD  
SUBMISSION, DESIGN INTENT SHOWN  
FOR REFERENCE ONLY**

**DISTRICT OF COLUMBIA RESPONSIBLE  
FOR DESIGN OF PUBLIC REALM**



WEST SECTION

EAST SECTION



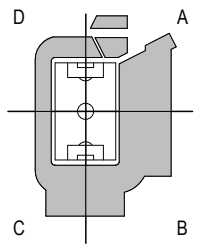
**1 ROOF PLAN**  
1" = 50'-0"

**POPULOUS**  
Marshall | Moya Design



DC UNITED SOCCER STADIUM  
100 Potomac Avenue, SW  
Washington, DC 20024

PUD #2 SUBMISSION



REF PLAN - ROOF PLAN